

# Fremantle Primary School



## Dates to Remember

**Tuesday 25 February — School Photos Kindy A and Yr1-6**

**Wednesday 26 February — School Photos Kindy B and PP**

**Wednesday 26 February — Community Bike Handling Course**

**Wednesday 26 February — School Board Meeting**

**Thursday 27 February — Assembly**

**Monday 2 March — Labour Day Public Holiday**

**21 February 2020**

**Issue 2**

- Principal's message
- Community News
- Board Nomination Letter
- Term Planner

## Update from the Principal

Dearest families of Fremantle,

Firstly, I would like to welcome our new board members: Josie Hodgetts and Zoe Schmidt (parent representatives), Edwina Allen, Janet Bain and Steven Da Silva (staff representatives). Thank you for putting forward your nominations and to all for considering these important positions for our school.

Today, those of you who have not made the switch to Connect, will be receiving this newsletter by Skoolbag for the last time.



It has been great to see a big uptake of Connect to notify us of absences. Thank you everyone for working with us as we slowly streamline our communications. This is also a move to develop our school's Australian Curriculum expectations around General Capabilities in ICT. We have sent out paper flyers, notices on SkoolBag and Facebook, and there is also a video that you can view [here](#). We are implementing Connect first with families as a means to send out notices, forms to sign and newsletters. Teachers are being trained to work with Connect Classrooms, and this facility will be rolled out over the coming months. On the next page are some frequently asked questions, however feel free to call us if you need any help.

Go Freo (PS)

Mr T

**Please download  
the Connect Now  
app on your  
phone.**

**All future  
Newsletters will be  
published via  
Connect**

**Please contact the  
office if you have  
not received your  
log in details for  
Connect**





## Frequently asked questions:

Will I be notified when a new notice has been published?

Yes. Each time a new notice is published by school staff, an email is automatically sent to your designated email account. The message is included in the email, however if you wish to access the images or files that are attached or add a comment (if the teacher has encouraged you to respond), you will be required to log onto Connect. Alternatively, you may download the free Connect Now app from Google Play or the Apple app store to receive the notifications on your phone.

- What if I don't really use email?

The Connect Now app enables parents to use their login details and stream all of the notices and discussions to their personal mobile device. The app is free and can be downloaded from the Google Play Store or the Apple App Store.

- Can I reply to messages?

The teacher will sometimes invite you to respond to messages. When this happens a Comment button will be visible under the Connect Notice. You can respond either by logging into Connect or through the Connect Now app.

- Who else sees the class notices?

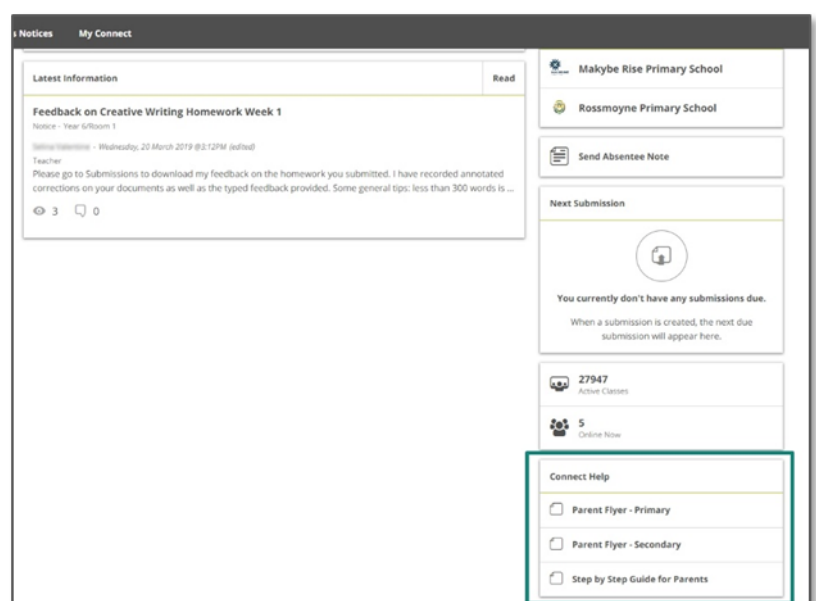
Only students and parents attached to a teacher's class are able to access and read class notices.

- What if I forget my login details?

You are able to set verification questions to reset your own password or if you prefer contact the school if you forget your login details.

- Where can I get more information?

Additional information is available as flyers at the bottom of on the Connect landing page under the heading Connect Help.





### Welcome Picnic

Our awesome annual **P&C Welcome Picnic** is today **Friday 21 February from 3pm** on the grass area at the main school.

There'll be a **FREE** inflatable obstacle course and giant games plus a gold coin donation sausage sizzle and ice creams (or icy poles) for the kids!

Your P&C will also have an information stall set up where you can:

- Find out who we are, what we do and how you can help us make a difference at our school;
- **Join us for only \$1;** and,

Learn all about our new Freo Primary School Dad's Group.

All families, new and returning, are welcome and encouraged to come and join the fun.

BYO picnic rugs and adult snacks.

### **Rules of the Inflatable Obstacle Course**

To ensure everyone is safe on the ride, each child will need to come with a responsible adult to the P&C info desk and collect a wrist band. No wristband = No ride.

Whilst the ride comes with an attendant, we ask parents to please actively supervise all children within their care (on and off the ride).

Anyone who acts irresponsibly on the ride will have their wristband removed. They will then need to be accompanied by a responsible adult back to the P&C info desk to request access back onto the ride.

We ask that the school community respects decisions made by the P&C to remove access where we believe other children are at risk.

Thank you for your understanding.

### Cook Book Fundraiser

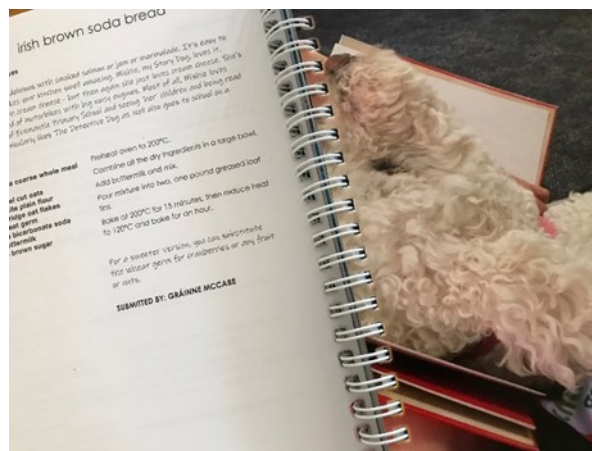
For those of you who are new to the school or haven't yet purchased a copy, our very own cook book, "Freo Family Favourites", is now available for sale through Quickcliq – although we'll also have a stall (with EFTPOS facilities) at the Welcome Picnic if you'd like to browse before you buy.

"Freo Family Favourites" is filled with recipes from the families and staff who make up our wonderful school community. There are recipes from Russia, China, Armenia, Indonesia, Brazil, France, Mexico and Germany, as well as lots of beautiful family heritage recipes like Great Grandpa's Easy Lemon Cheesecake, Grandma's Toll House Choc Chip Cookies, Millie's Five Minute Tea Cake, Nana's Summer Roll, Tata's Chilli, Nona's Ceci Soup and My Irish Mammy's Christmas Cake.

What better way to get to know one another, get some inspiration in the kitchen and raise money for our school (and, in turn, our kids).



It's a little bit Freo...



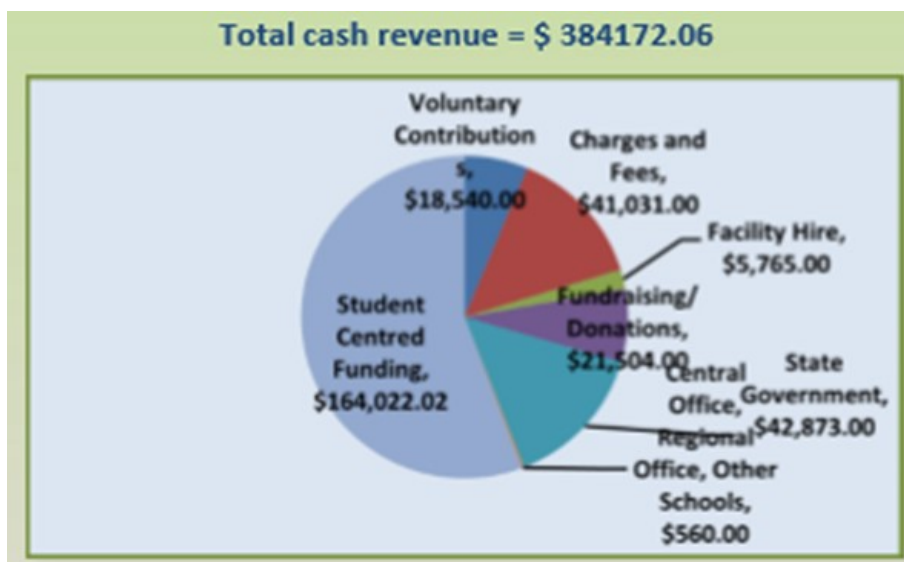
And a lot Freo Primary!

### Voluntary Contributions

Like us (before joining the P&C), I'm guessing most of you assume that our school receives all of the revenue it needs from the government.

We can assure you that this is not the case.

Taken from the 2018 Fremantle Primary School Annual Report the pie chart below shows our school's cash revenue for 2018.



**Among other things, this chart clearly shows the importance of voluntary contributions (and fundraising!) to our school's revenue.**

An example of how this money is used can be seen by the toilet doors installed last year. At a cost of \$15,000, these doors were installed to keep our children safer and were paid for entirely by money raised through your P&C's fundraising efforts.

So, if you can afford to pay all of the voluntary contributions requested by the school, please do so.

It is much needed and will be greatly appreciated.

(We know the beginning of the school year can be a financial burden, so if you can't afford to pay now, you can always defer your payment until the burden has been relieved).

### **Ponytails and Fairytales Fundraiser**

Don't forget! Our school earns 20% when you buy your school uniform hair accessories, faction colours, sports day products (and even gifts) from Ponytails and Fairytales.

Just head to [www.PonytailsandFairytales.com.au](http://www.PonytailsandFairytales.com.au)>Shop School Bows>Shop by School>Find Schools in WA>Select Fremantle Primary School and purchase from the huge range of quality accessories available.



My girls are loving theirs!

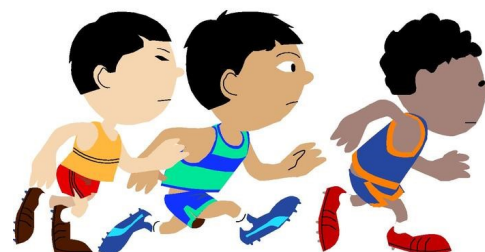
### **Phys Ed in 2020**

Students in the junior years will learn about the importance of following rules, staying within boundaries, co-operation and teamwork, and spatial awareness when participating in physical activity. There will be a focus on fundamental movement skills and object control which will help them to build a solid foundation for when they begin practice for our faction carnival, and learn the skills of other sports later in the year.

Students in the senior years will learn the skill of a variety of sports such as cricket, tee-ball, football, soccer, netball, and volleyball. Through these sports values such as sportsmanship, teamwork, and participation will be encouraged. These students will have the opportunity to represent our school at various events such as the Interschool Swimming Carnival, T20 Blast, Winter Carnival, Interschool Cross Country, and Interschool Athletics.

Regards

Glenn Pozzi ([Glenn.Pozzi@education.wa.edu.au](mailto:Glenn.Pozzi@education.wa.edu.au)).





**Happy Lunch Box** will be serving Thursday & Friday  
Semester 1 2020.

Look out for New menu in Skoolbag.

See Happy Lunch Box Facebook Page

&

[www.quickcliq.com.au](http://www.quickcliq.com.au) for updates.



INTERESTED IN YOUR CHILD PLAYING NETBALL WITH A  
LOCAL COMMUNITY-FOCUSED CLUB?

WINTER SEASON 2020

NOW ACCEPTING REGISTRATIONS

REGISTER VIA MYNETBALL APP/WEBSITE or

OUR FACEBOOK PAGE or

OUR REGISTRATION DAY

**FREOFURY NETBALL CLUB (INC)**



### **UNIFORM SHOP INFORMATION**

A reminder the uniform shop is open

Thursdays at 8.30am and Fridays at 2.45pm during the school terms

Orders can be placed online at [freopc.tidyhq.com](http://freopc.tidyhq.com)

Payment by cash or cheque—sorry no EFTPOS facilities available for uniform collection

### Term 1 Fremantle Before School Tennis Program



-All new enrolments receive a free hot shots Tennis racquet.

-Friday 14th February 8 week program from 8.00-8.45 am @ Fremantle Primary School (we use mini tennis nets)

-To enrol or inquire please contact Brendan on 0401565051 or [fremantletopspintennis@gmail.com](mailto:fremantletopspintennis@gmail.com)

Thanks,

Brendan

Director

## FREE PARENTING SEMINARS

You are invited to attend the Triple P Seminar Series. You will learn practical, positive and effective ways to deal with common behavioural problems and ways to help your child achieve their best at school and in the future.

Parents are encouraged to attend all 3 seminars:

*Children's behaviour - the tough part of parenting*

*Raising Confident Children*

*Raising Emotionally Resilient Children*

The next **FREE** 3 week Series is held:

**When:** Starting Wed 26 Feb 2020

**Location:** Coolbellup Community Hub

**RSVP:** Bookings are essential and places are limited.

**Please visit [healthywa.wa.gov.au/parentgroups](https://healthywa.wa.gov.au/parentgroups) to book your place.**

**To find other available programs visit our website**

## WANSLEA OSHC

Looking at Before & Afterschool care and wondering what your out of pocket cost will be per day?  
Look at our quotes below based on your childcare subsidy percentage;

Before school care – Full fee \$24

Before school care – with CCS applied \$7.07 based on 85% childcare subsidy.

Before school care – with CCS applied at \$14.04 based on 50% childcare subsidy.

Afterschool care – Full fee \$36

Afterschool care – with CCS applied \$6.93 based on 85% childcare subsidy.

Afterschool care – \$18.90 with CCS applied based on 50% childcare subsidy.

We provide breakfast and afternoon tea daily. Come in to meet our friendly staff to get an enrolment pack or email [fremantle@wanslea.asn.au](mailto:fremantle@wanslea.asn.au) for more information.

**Jessica de Mello | Outside School Hours Care Coordinator**

8/75 Miguel Road Bibra Lake 6163

Ph: (08) 9245 2441 Mob: 0478 773 272

Fax: (08) 9245 2481

Web: [wanslea.asn.au](http://wanslea.asn.au) | [www.fosternow.com.au](http://www.fosternow.com.au)

*We acknowledge the traditional owners of this land, their ancestors and Elders, and are committed to reconciliation amongst all Australians*

Parties  
Terms  
Holidays  
Functions  
At Schools



## TERM PROGRAMS 2020

**New enrolment always welcome!**  
**FREE TRIAL SESSION AVAILABLE!**



*Give your child a gift for life*

### SKILL DEVELOPMENT

A fun exercise and coordination program including catching, throwing, running, agility, batting, kicking and dribbling. A great introduction to sport helping to build confidence, social skills and school readiness.

Day:	Time:	Venue:
Monday	9:30am – 10:30am	Marmion Reserve
Tuesday	10:45am – 11:45am	Marmion Reserve
Wednesday	9:30am – 10:30am	Marmion Reserve
Thursday	10:45am – 11:45am	Marmion Reserve
Friday	9:30am – 10:30am	Marmion Reserve
Saturday	10:45am – 11:45am	Marmion Reserve
Sunday	8:30am – 9:30am	Mount Pleasant P.S
Sunday	9:45am – 10:45am	Mount Pleasant P.S

Pre-Kindy  
& Kindy

### MULTI SPORT

Advanced sports activities further developing the full range of skills and rules of 4 seasonal sports. A fantastic program that promotes teamwork, positive attitudes to sport and is great fun for all skill levels.

Day:	Time:	Venue:
Monday	3:45pm – 4:45pm	Marmion Reserve
Tuesday	3:45pm – 4:45pm	Marmion Reserve
Wednesday	3:45pm – 4:45pm	Marmion Reserve
Thursday	3:45pm – 4:45pm	Marmion Reserve
Saturday	8:30am – 9:30am	Mount Pleasant P.S
Sunday	9:45am – 10:45am	Mount Pleasant P.S

Pre-Primary  
Years 1 - 3

### SPECIALIST SPORTS

(Summer – Cricket)
(Winter – Footy)

A comprehensive program covering all aspects of cricket and footy including skill specific coaching, technique development, tactics, rules, gameplay and much more. Promotes a high level of sportsmanship and suitable for all skill levels.

Day:	Time:	Venue:
Tuesday	3:45pm – 4:45pm	Marmion Reserve
Wednesday	3:45pm – 4:45pm	Marmion Reserve

Pre-Primary  
Years 1 - 3

### BIRTHDAY PARTIES

Kidz'n Sport Birthday Parties are a great way to celebrate your child's special day. We will provide a party to remember so your child and their friends can celebrate in a fun, healthy, exciting and energizing way!

TURN OVER FOR MORE INFORMATION.

**Enrol Now: [www.kidznspport.com.au](http://www.kidznspport.com.au)**

Mike Lee – 0417 923 084 / [mikelee@kidznspport.com.au](mailto:mikelee@kidznspport.com.au)

MELVILLE &amp; SURROUNDS



# LIBRARYCRAFT

Build your best Minecraft House in  
LibraryCraft and you could win a \$50 JB  
HiFi Voucher!

Competition Closes 31 July, 2020

LibraryCraft is:  
Free!

Minecraft 1.15 Server  
Supported by Fremantle Library  
24/7 Whitelisted Java Edition  
for 7 to 17 year olds in WA

Multi World - Survival/Creative/PVP  
Build Protection  
Shops & Economy  
PVP & Spleef Arenas

info: [librarycraft@fremantle.wa.gov.au](mailto:librarycraft@fremantle.wa.gov.au)



## After School

Enrichment Class

Term 2

Theme:  
Spectacular Sport

Introduce **STEM**  
at an early stage.

For a full description of each  
workshop and registration,  
please visit our website at  
<http://visit.school/fremantle>



- ✓ Educational & Fun Lego® classes
- ✓ Learning something new each week
- ✓ BUILD IT! CODE IT!
- ✓ Amazing In-House models

Prepare for the coming Olympics as we will be creating  
all sorts of different sports Lego builds.

**Motorised LEGO®**  
(5-6 years old)

**Junior Robotics**  
(7-8 years old)

**Advanced Robotics**  
(9+ years old)



connect with us @ b4kapplecross

Tim Yap : 0422 119 020  
[applecross@bricks4kidz.com](mailto:applecross@bricks4kidz.com)

## BRICKS 4 KIDZ

It is now the early bird period which  
means a 10% discount if parents  
book now. The early bird promotion  
ends on the 24th March.

The link for parents to obtain more  
info and to register is

<http://visit.school/fremantle>